

ROTO SEAL COUPLING



Features

- Body** : Aluminium Pressure Die Cast, IC CF8, IC WCB, Cast Iron
- Size** : 1/4", 3/8", 1/2", 3/4", 1", 1.1/4", 1.1/2", 2", 2.1/2"
- Seals** : PTFE / Carbon Graphite
- RPM** : UPTO 3500 RPM
- Press.** : Upto 10 Kg/cm²
- Temp.** : Upto 350 °C
- Media** : Air, Water, Oil, Gas, Chemical & Steam, Thermic Fluid Oil

ISO 9001 : 2008
BUREAU VERITAS
Certification





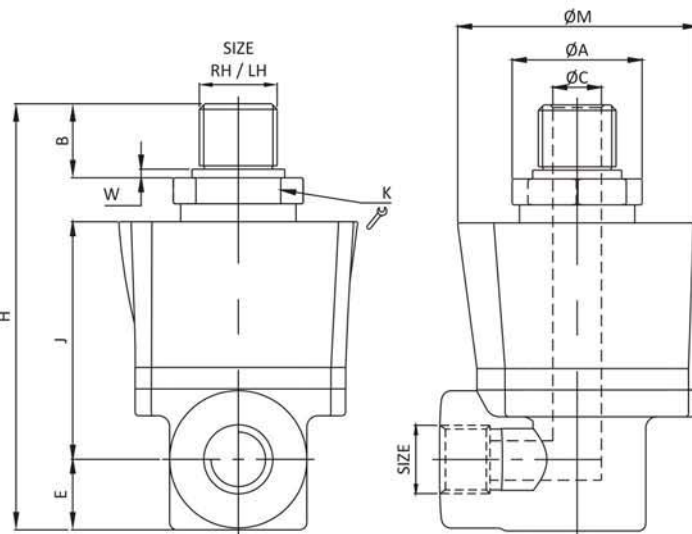
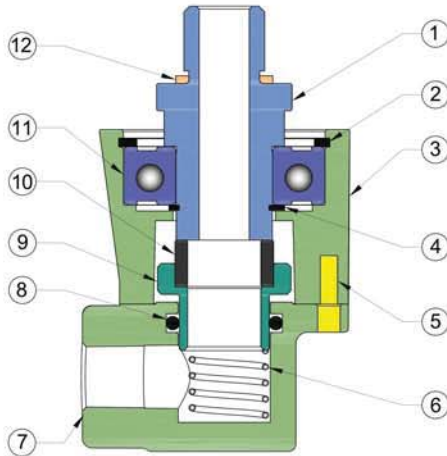


Features

- ▶▶ Aluminum Construction
- ▶▶ Light Weight
- ▶▶ Suitable for Only Air Application
- ▶▶ Seals, Ball Baring as per International Std.
- ▶▶ Simple design easy to maintenance

Technical Specification

Model	ALR
Size	1/4", 3/8", 1/2", 3/4", 1", 1.1/4" & 1.1/2"
Pressure	Upto 8 Kg/cm ²
Temperature	Upto 50 °C
Leakage	Bubble Tight
RPM	900 Max.
Media	Only For Air Application



No.	Part Name	Material
1	Shaft	Standard Steel
2	Circlip Internal	Standard
3	Housing	Aluminum
4	Circlip External	Standard
5	Allen Key	S. S.
6	Spring	S. S.
7	Bottom	Aluminum
8	'O' Ring	NBR
9	Piston	Aluminum
10	Seals	Carbon
11	Bearing	Standard
12	Washer	Copper

Dimensions :

(All Dimensions are in mm)

MODEL	SIZE	ØA	C	ØC	E	ØM	H	J	K	W	Weight (Kg.) Approx.
ALR - 06	1/4"	25.5	13	6.5	12.5	46	93	55.5	22.5	1.5	0.448
ALR - 10	3/8"	25.5	13	9	12.5	46	93	55.5	22.5	1.5	0.414
ALR - 15	1/2"	35	20	13	21	65	118	64	31	1.5	0.620
ALR - 20	3/4"	35	20	17	21	65	118	64	31	1.5	0.697
ALR - 25	1"	48	25.5	21.5	23.5	79	138	74	42	1.5	1.070
ALR - 32	1.1/4"	56.6	25.5	28.5	37.5	86	163	84	51.5	1.5	2.746
ALR - 40	1.1/2"	56.6	25.5	28.5	37.5	86	163	84	51.5	1.5	2.746

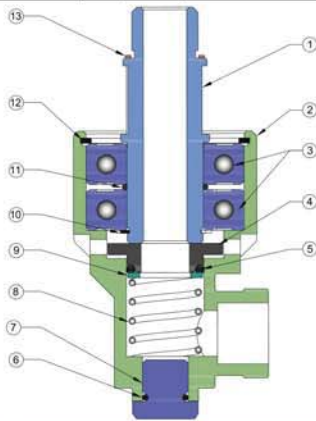
Roto Seal Coupling

Features

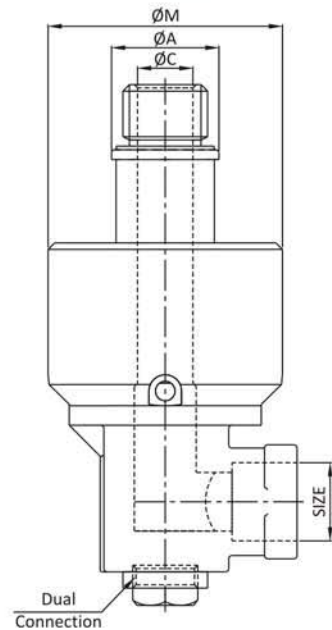
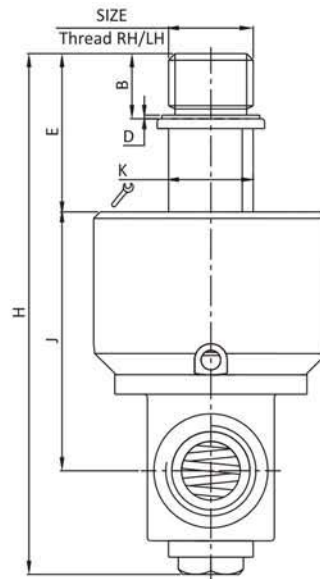
- ▶▶ General Purpose Application
- ▶▶ Stainless Steel MOC
- ▶▶ Standard Double Jet SKF Original Bearing
- ▶▶ Dual Flow Design

Technical Specification

Model	ALR
Size	1/4", 3/8", 1/2", 3/4", 1", 1.1/4", 1.1/2" & 2"
Pressure	Upto 8 Kg/cm ²
Temperature	Upto 50 °C
Leakage	Bubble Tight
RPM	1000 Max.
Media	Air / Water / Oil & Gas



No.	Part Name	Material
1	Shaft Rotor	CF8
2	Body	CF8
3	Bearing	Standard
4	Seals	CFT
5	'O' Ring	Viton
6	'O' Ring	NBR
7	Thread Plug	Steel Plated
8	Spring	Stainless Steel
9	Washer	S. S.
10	Circlip (External)	Standard
11	Spacer	Stainless Steel
12	Circlip (Internal)	Standard
13	Washer	Copper



Dimensions :

(All Dimensions are in mm)

MODEL	SIZE	ØA	B	C	D	E	H	J	K	ØM	Dual Connection	Weight (Kg.) Approx.
ALR - 06	1/4"	18	13	6	1.5	33	92	46	13	40	1/8"	0.347
ALR - 10	3/8"	24	13	10	1.5	32	109	53	19	49	1/4"	0.590
ALR - 15	1/2"	27	16	12	1.5	32	115	62	20	55	3/8"	0.710
ALR - 20	3/4"	32	20	18	1.5	49	155	79	29	72	1/2"	1.645
ALR - 25	1"	41	24	23	1.5	58	185	91	36	82	3/4"	2.252
ALR - 32	1.1/4"	49	25	30	1.5	59	200	98	44	90	1"	3.013
ALR - 40	1.1/2"	56	25	36	1.5	59	220	116	48	95	1.1/4"	3.725
ALR - 50	2"	69	30	48	1.5	82	310	162	60	120	1.1/4"	6.570

Note : Since, constant worldwide advancement in technology, We keep our rights reserved to make changes time to time in Technical Specification and Dimensions without prior notice.



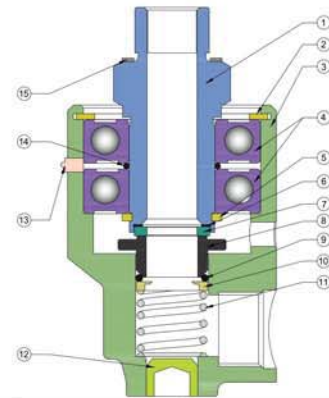
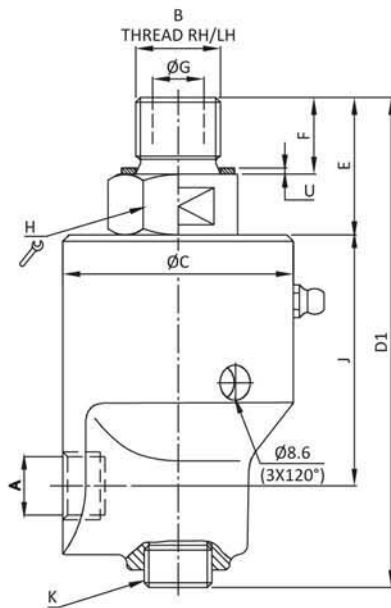


Features

- ▶▶ Heavy Duty Design
- ▶▶ Double FAG / SKF Bearing
- ▶▶ Single & Dual Flow Application
- ▶▶ Complete S. S. 304 MOC
- ▶▶ Suitable for Critical Application

Technical Specification

Model	DRS
Size	1/4", 3/8", 1/2", 3/4", 1", 1.1/4", 1.1/2" & 2"
Pressure	Upto 12 Kg/cm ²
Temperature	Upto -5 to 150 °C
Leakage	Bubble Tight
RPM	3500 Max.
Media	Chilled Water / Semi Hot Water



No.	Part Name	Material
1	Shaft	IC CF8
2	Circlip Housing	Standard S. S.
3	Body	IC CF8
4	Bearings	Standard S. S.
5	Rotor Shaft Circlip	Standard S. S.
6	Rubber Sheet	NBR
7	Seal	Silicon Carbon Tungston
8	Seal	Carbon Graphite Bronze
9	'O' Ring	Viton / Nitrile
10	Washer	Brass
11	Spring	Stainless Steel
12	Thread Plug	Stainless Steel
13	Grease Nipple	Standard
14	Spacer	Stainless Steel
15	Seal Washer	Copper

Dimensions :

(All Dimensions are in mm)

MODEL	SIZE	A	B (BSP) Rotor Connection	ØC	D1	E	F	ØG	H	J	K (BSP)	U	Weight (Kg.) Approx.
DRS - 06	1/4"	1/4"	1/4"	46	100	23	13	7.5	22.5	57	1/8"	1.5	0.625
DRS - 10	3/8"	3/8"	3/8"	46	125	26	16	9.5	22.5	57	1/4"	1.5	0.632
DRS - 15	1/2"	1/2"	1/2"	57	121	35	19	12.7	29	62	3/8"	1.5	1.101
DRS - 20	3/4"	3/4"	3/4"	73	135	33.5	19	17.5	36	76.5	1/2"	1.5	1.885
DRS - 25	1"	1"	1"	82	160	42	22	25	46	84.5	3/4"	1.5	2.745
DRS - 32	1.1/4"	1.1/4"	1.1/4"	91	190	54	28	32	46	90	1"	1.5	3.625
DRS - 40	1.1/2"	1.1/2"	1.1/2"	108	228	72	29	38	55	149	1.1/4"	2	6.700
DRS - 50	2"	2"	2"	118	252	65	29	47.5	60	126	1.1/4"	1.5	7.600

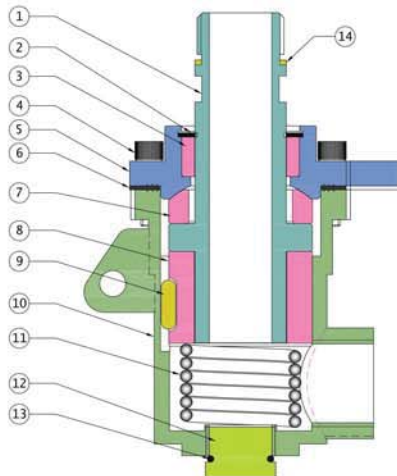
Thermic Fluid Roto Seal Coupling

Features

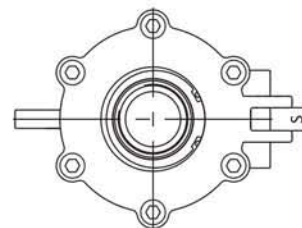
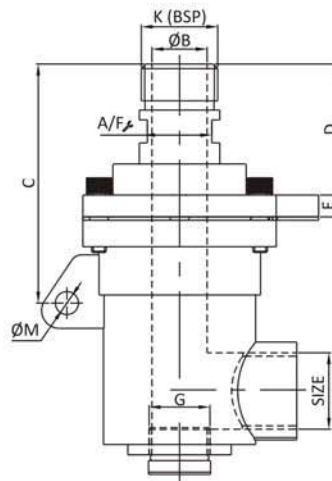
- ▶▶ Dual Flow Design
- ▶▶ Self Supported Rotating Union
- ▶▶ Spherical Carbon Graphite Seal
- ▶▶ Seal Wear Indicator allows prevent maintenance

Technical Specification

Model	ARH
Size	3/4", 1", 1.1/4", 1.1/2" & 2"
Pressure	Upto 10 Kg/cm ²
Temperature	Upto 350 °C
Leakage	Bubble Tight
RPM	300 Max.
Media	Thermic Fluid



No.	Part Name	Material
1	Shaft	S. Steel
2	Ciclip Housing	S. Steel
3	Cover Ring	Carbon
4	Screw	S. Steel
5	Cover	WCB
6	Gasket	C. A. F.
7	Seal Ring	Carbon CFT
8	Bush	Carbon
9	Lock Key	Hardchrome Plated
10	Body	WCB
11	Spring	S. S. 304
12	Plug	S. S. 304
13	Packing	CAF
14	Washer	Copper



Dimensions :

(All Dimensions are in mm)

MODEL	SIZE	K (BSP) RH / LH	G	A/F	ØB	C	D	E	S	ØM	Weight (Kg.) Approx.
ARH - 20	3/4"	3/4"	1/2"	30	19	105	57	09	9.7	10	2.800
ARH - 25	1"	1"	3/4"	30	24	105	57	09	9.7	10	2.750
ARH - 32	1.1/4"	1.1/4"	1"	44	32	165	90	15	17	10	9.500
ARH - 40	1.1/2"	1.1/2"	1.1/4"	44	34	165	90	15	17	10	9.450
ARH - 50	2"	2"	1.1/4"	59	44	168	92	16	17	13.8	15.200

Note : Since, constant worldwide advancement in technology, We keep our rights reserved to make changes time to time in Technical Specification and Dimensions without prior notice.



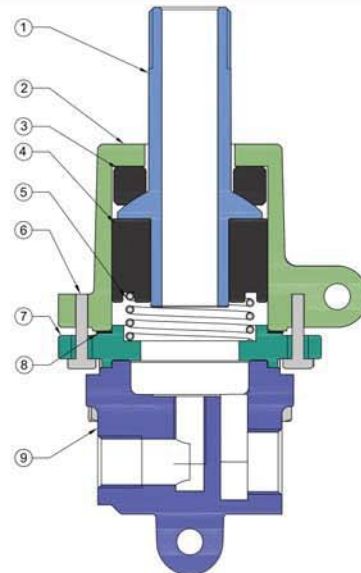
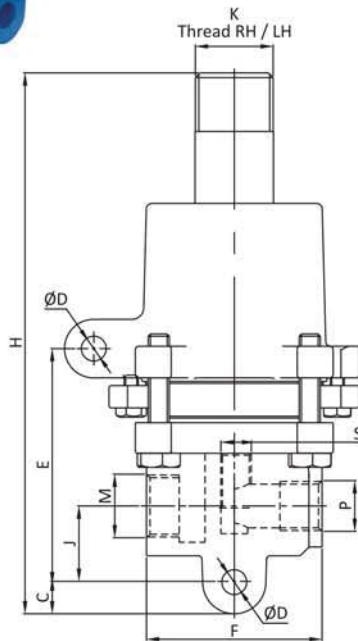


Features

- ▶▶ Design for steam applications.
- ▶▶ Optimized seal diameter.
- ▶▶ Convex seal ring in compression.
- ▶▶ Adjusting syphon clearance option.

Technical Specification

Model	AXS
Size	1/2", 3/4", 1", 1.1/4", 1.1/2" & 2"
Pressure	Upto 10 Kg/cm ²
Temperature	Upto 180 °C
Leakage	Bubble Tight
RPM	200 Max.
Media	Only for Steam



No.	Part Name	Material
1	Shaft	EN 8
2	Body Top	Cast Iron
3	Seal Ring	Carbon
4	Carbon Bush	Carbon
5	Spring	S. S. 304
6	Hex Bolt	Standard
7	Cover Plate	Cast Iron
8	Gasket	C.A.F.
9	Connection Body	Cast Iron

Dimensions :

(All Dimensions are in mm)

MODEL	SIZE	K (BSP) Rotor Connection	C	E	H	J	M BSP	P BSP	S BSP	ØD	F	Weight (Kg.) Approx.
AXS - 15	1/2"	1/2"	7.5	85	160	21	1/4"	1/4"	1/8"	6.5	53	1.700
AXS - 20	3/4"	3/4"	12.5	105	207	29	1/2"	1/2"	1/4"	9.5	69	3.150
AXS - 25	1"	1"	13.5	103	232	29	3/4"	1/2"	1/4"	10	75	3.800
AXS - 32	1.1/4"	1.1/4"	15	120	263	36	1"	1/2"	1/2"	14	84	5.400
AXS - 40	1.1/2"	1.1/2"	17	140	305	44	1.1/4"	3/4"	3/4"	14	107	9.500
AXS - 50	2"	2"	16	145	340	49	1.1/2"	3/4"	3/4"	14	114	10.800

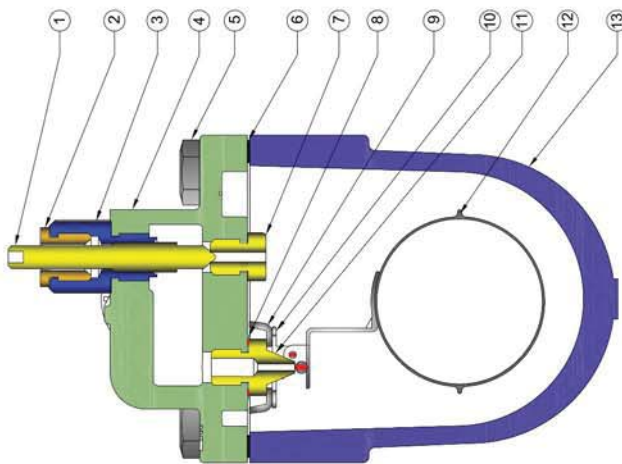
Ball Type Float Steam Trap

Features

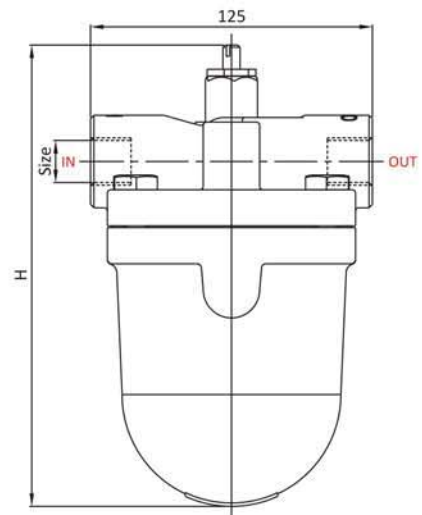
- » Design for outstanding performance.
- » Simple & Sturdy design.
- » Float steam trap rugged, simple & trouble free operation.
- » Efficient & Maintenance free.
- » Air venting facility.

Technical Specification

Model	SBD
Size	1/2", 3/4", 1", 1.1/4", 1.1/2" & 2"
Pressure	Upto 10 Kg/cm ²
Temperature	Upto 200 °C
Leakage	Bubble Tight
Media	Steam



No.	Part Name	Material
1	Adjusting Spindle	S. Steel
2	Gland	Brass / S. S.
3	Hex Nipple	S. Steel
4	Cover	Cast Iron
5	Hex Bolt	Standard
6	Gasket	CAF
7	SLR Sheet	S. Steel
8	Orifice Flat Washer	S. Steel
9	C. Clamp	S. Steel
10	S. Mounting Clamp	S. Steel
11	Orifice Hex Bolt	S. Steel
12	Drain Ball Assembly	S. Steel
13	Body	Cast Iron



Dimensions : (All Dimensions are in mm)

MODEL	SIZE	L	H	Weight (Kg.) Approx.
SBD - 15	1/2"	125	204.5	4.400
SBD - 20	3/4"	125	204.5	4.400
SBD - 25	1"	247	130	8.230
SBD - 40	1.1/2"	270	280	21.780
SBD - 50	2"	300	320	28.970